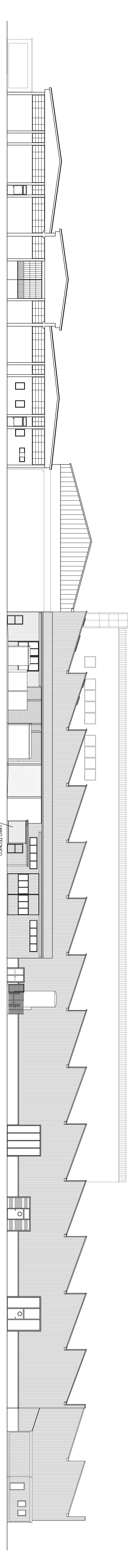
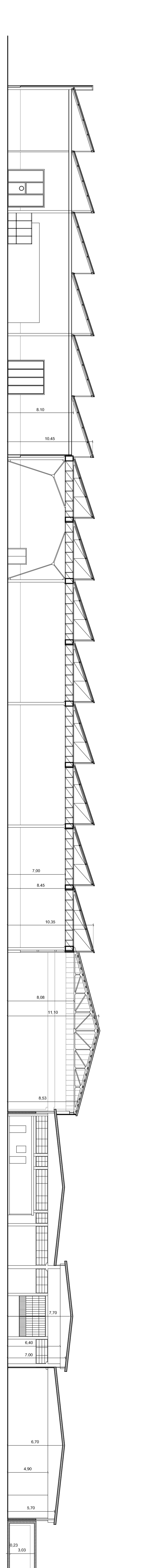


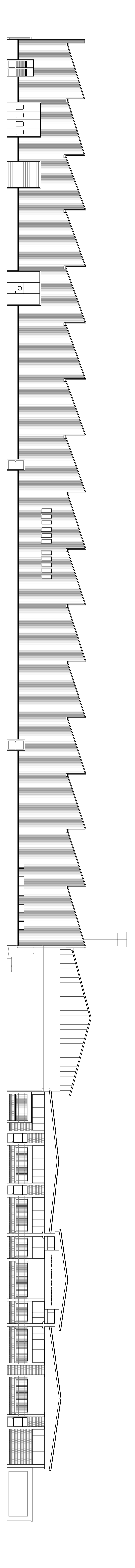
PLANIMETRIA GENERALE  
sc. 1:2000



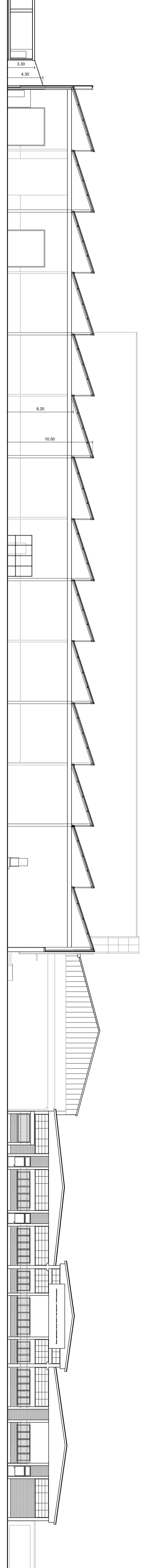
PROSPETTO NORD - OVESTI scala 1:200



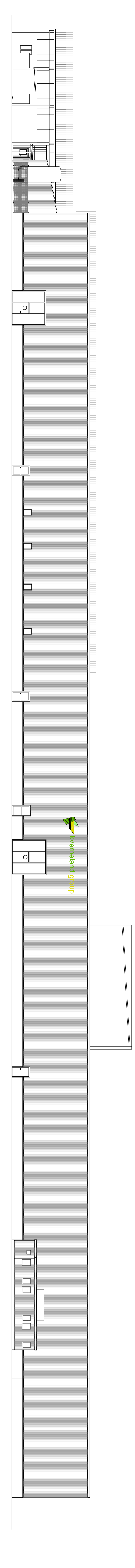
SEZIONE "A - A" scala 1:200



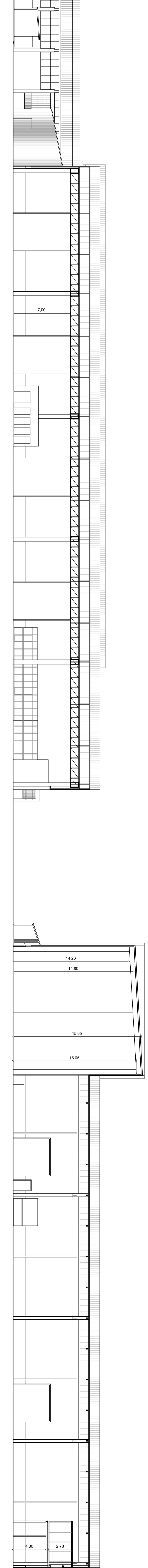
PROSPETTO SUD - EST, LATO VIA A. DE GASPERI scala 1:200



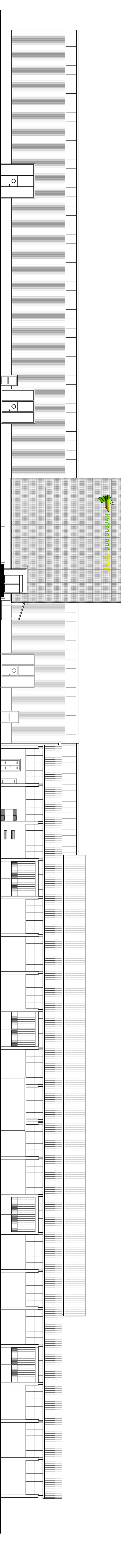
SEZIONE "B - B" scala 1:200



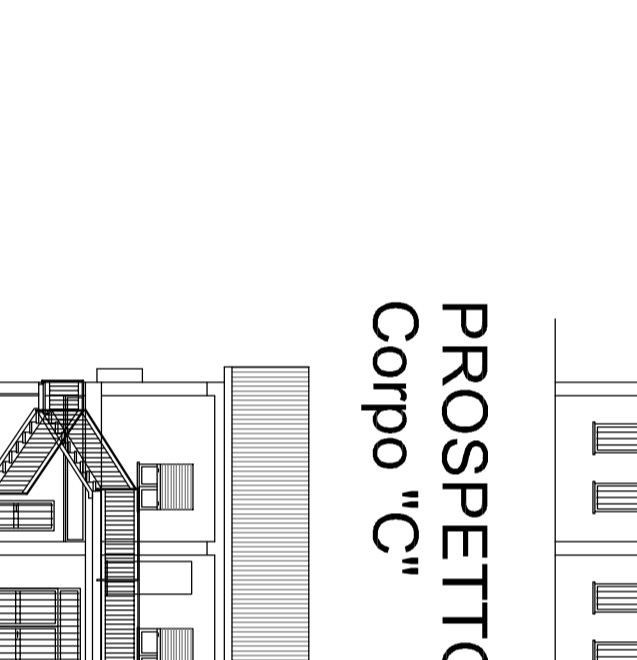
PROSPETTO SUD - OVESTI, LATO VIA MADRARÀ scala 1:200



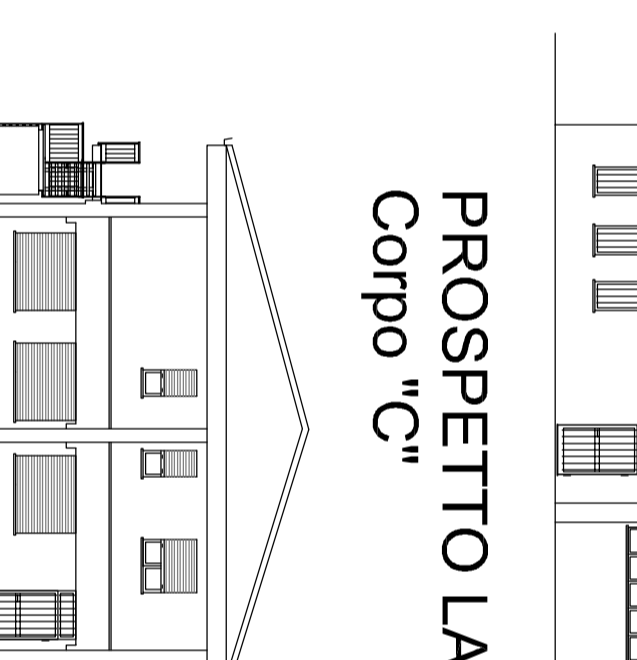
SEZIONE "C - C" scala 1:200



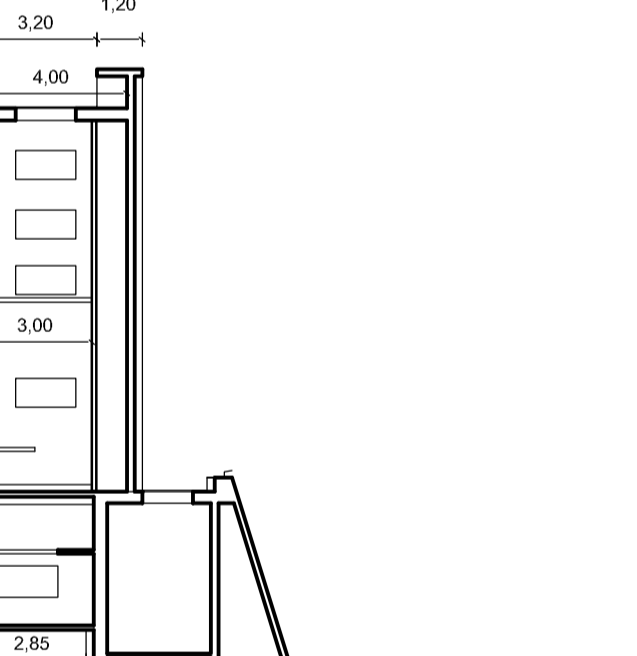
PROSPETTO NORD - EST, LATO FERROVIA scala 1:200



PROSPETTO FRONTE  
Corpo "C"



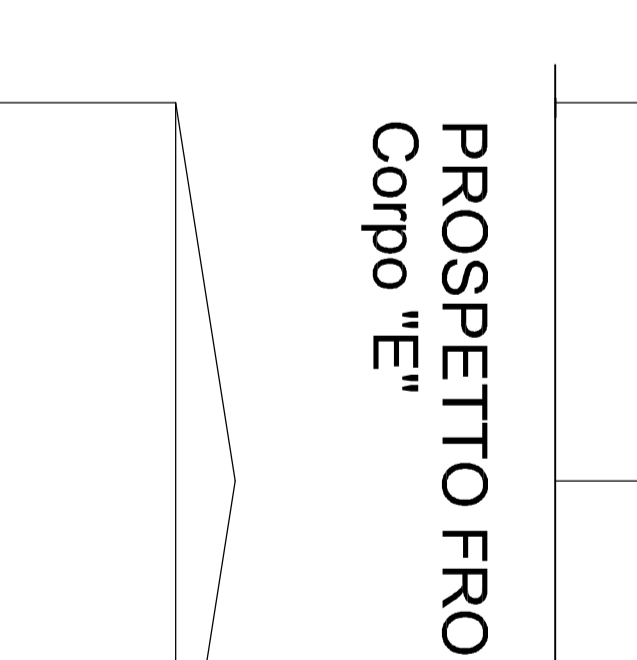
PROSPETTO LATERALE  
Corpo "C"



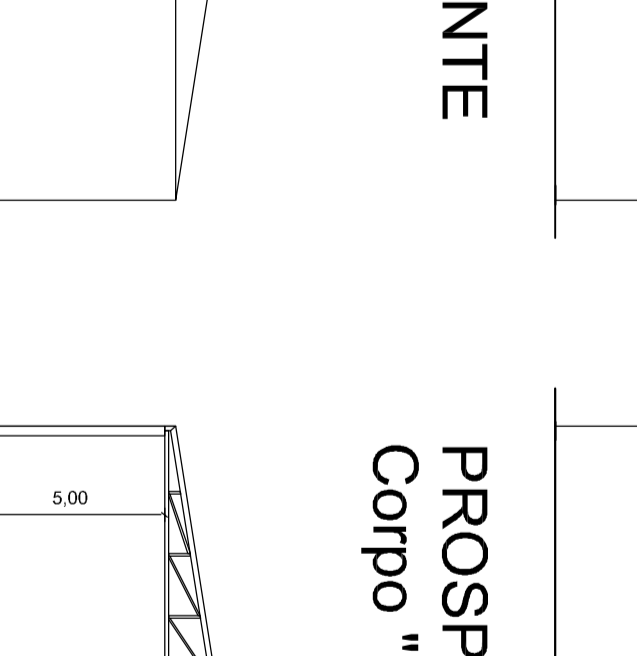
SEZIONE "D - D"  
Corpo "C"



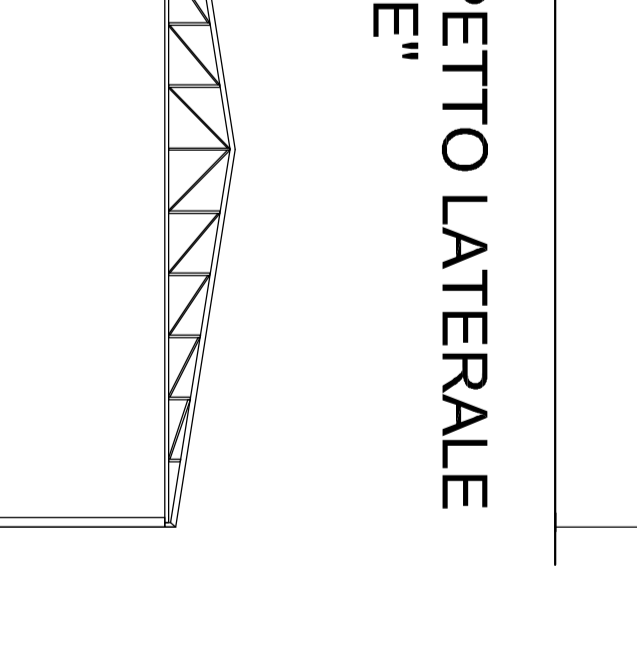
PROSPETTO RETRO  
Corpo "C"



PROSPETTO FRONTE  
Corpo "E"



PROSPETTO LATERALE  
Corpo "E"



SEZIONE "E - E"  
Corpo "E"